



**Peep Green Road, Hartshead, WF15 8AH**  
**Prices From £355,000**

**E&H** Holmes  
ESTATE AGENTS

OPEN VIEWING 5-7PM THURSDAY 18TH APRIL

'Aprils View' is a small development of 13 townhouses offering residents all the amenities of modern living and tastefully built houses in a rural setting. The development consists of four blocks of mews houses formed around parking courtyards accessed from the new road.

Dwellings are of a rural character with natural stone walls, slate roof and natural stone detailing. Boundary treatments include dry stone walling, hedging and timber fencing. The site benefits from three additional visitor parking spaces.



Plots 1-4 are fronting Peep Green Road offering beautiful far reaching views. The terrace of 3 & 4 bedroom dwellings benefits from a private parking area to the rear and good sized front, rear and side gardens.

Plots 5-7 are fronting Peep Green Road, offering beautiful far reaching views and comprise of a terrace of 3 & 4 bedroom dwellings with a private parking area to the rear and good sized front, rear and side gardens.

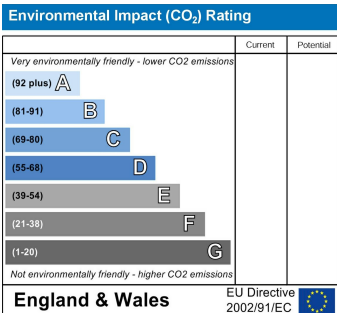
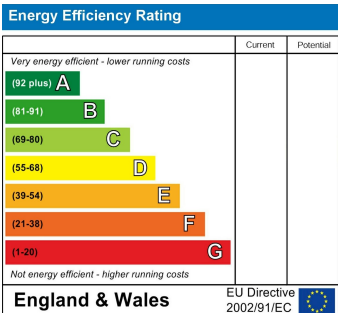
Plots 8-10 are in a courtyard setting and comprises of a terrace of 3 & 4 bedroom dwellings with courtyard parking spaces and extensive gardens to the front and rear.

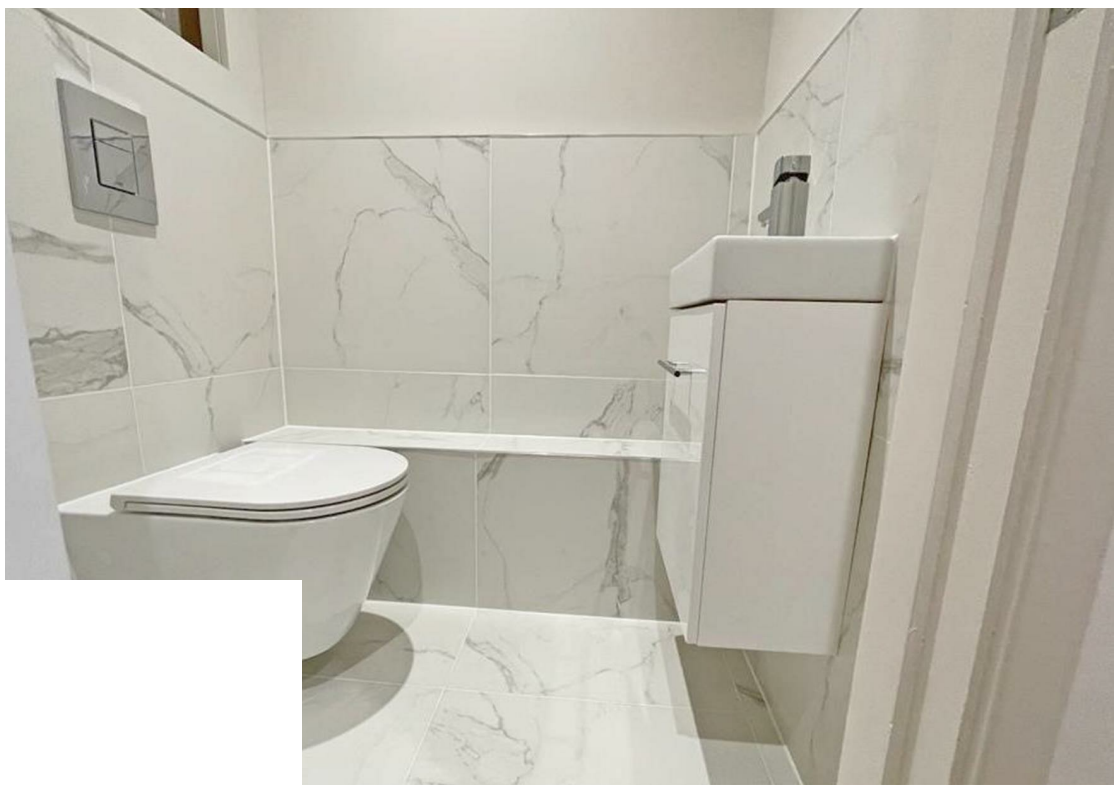
Plots 11-13 are in a courtyard setting and comprises of a terrace of 3 bedroom dwellings with courtyard parking spaces and gardens to the front and rear.

All dwellings are spacious and benefit from large living areas with rear doors opening out to gardens, separate dining kitchens, cloakrooms, master bedroom suites with en-suite and walk-in wardrobes /dressing areas and family bathrooms.

Prices from £355,000 - £375,000 for plots 1,2,3,5,6,9,10,11 and 12

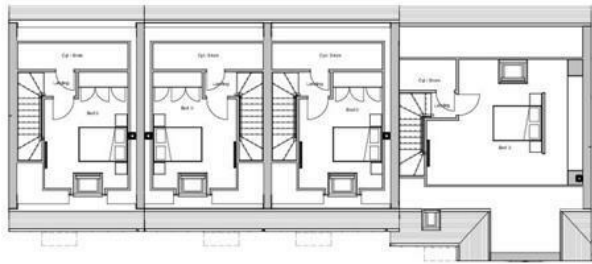
Prices from £450,000 - £475,000 for plots 4,7,8 and 13.



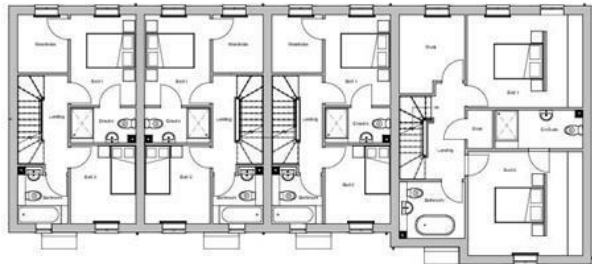




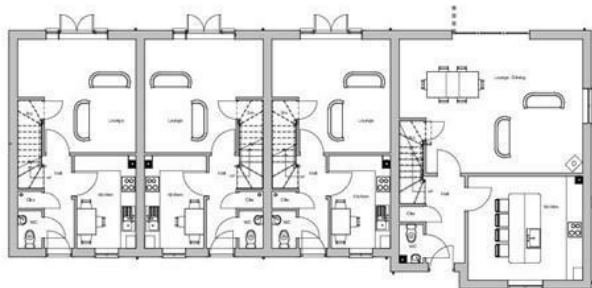
# Plots 1-4



Second Floor Plan



First Floor Plan



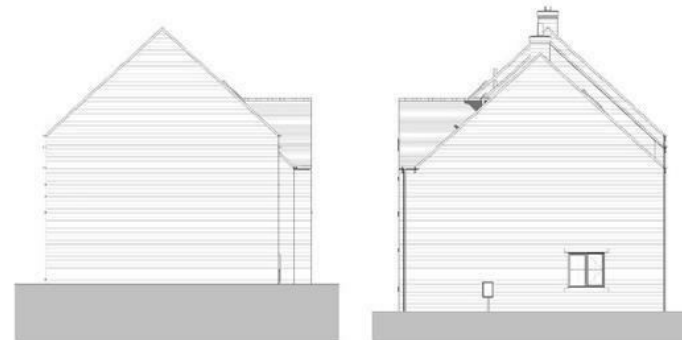
Ground Floor Plan



Front Elevation



Rear Elevation



End / Side Elevations